



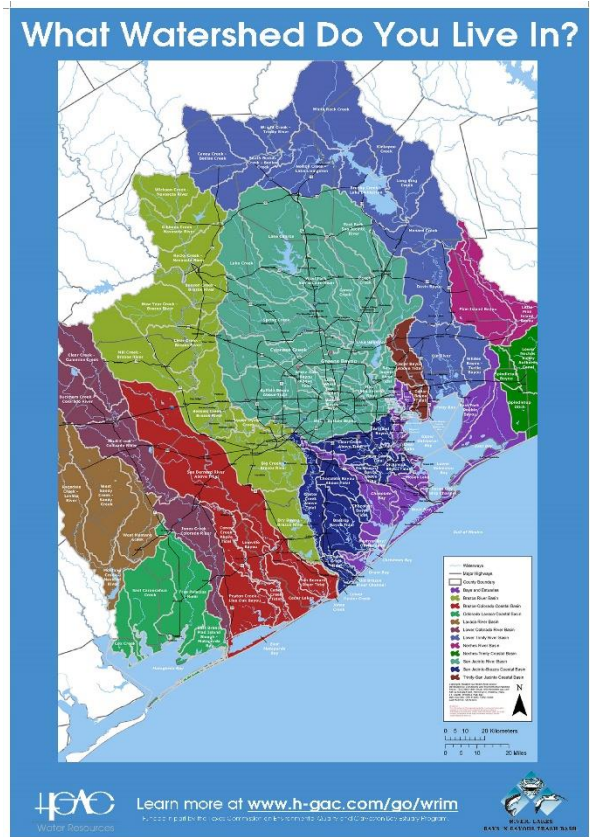
Activity: Journey Through the Watershed

Topic: Watersheds

TEKS: S.8.4.A; S.(1-5).2

Background: <watch the Artist Boat and Baytown Nature Center videos on watersheds>

Watersheds are areas of land that drain into a body of water. Each body of water has a watershed, and watersheds can build on each other. For example, Dickinson Bayou flows into Galveston Bay. Dickinson Bayou's watershed can be divided into the watersheds of its smaller tributaries – both natural streams and man-made features like drainage channels, storm drains or ditches. Galveston Bay's watershed includes all of Dickinson Bayou's watershed, plus all of the watersheds of the other creeks and bayous that flow into it. When you combine all of these subwatersheds that flow into Galveston Bay – including the San Jacinto and Trinity Rivers – the complete Galveston Bay watershed includes a large part of East Texas. Of course, it is not just water that drains into the waterways and travels to Galveston Bay – pollution can also travel into the waterways as part of stormwater runoff.



Materials:

- Computer
- Internet access

Instructions:

Part 1 - Investigate

1. Use a one of the Find Your Watershed Tools to locate the watershed in which your house or school is located.
 - a. [The Galveston Bay Report Card Tool](#) – lower Galveston Bay watershed specific, includes Galveston, Chambers, and Brazoria County watersheds;
 - b. [The San Jacinto River Authority Tool](#) – includes a more detailed breakdown of Harris and Montgomery County watersheds;



- c. [EPA's How's My Waterway Tool](#) – not specific to local watersheds but includes a summary of known waterway conditions. Good option for learning more or if your watershed is just outside the Galveston Bay watershed.
2. Use the tools above, google maps or other satellite imagery tools to trace the journey water (and potentially pollution like litter) would take – first from your location to the waterway the tool identified, and ultimately to Galveston Bay.

Part 2 – Discuss/Report

Depending on grade level and current learning environment, choose from the following report/discussion options:

1. Oral or visual report on the journey
2. Oral or visual report on the journey including the number of steps and whether the journey included any waterways made or altered by humans
3. Choose another watershed in a different type of location (urban, suburban, rural), trace its journey to Galveston Bay and report on or discuss how the journeys are different, including differences resulting from human alterations to the environment (such as concrete channelization, drainage ponds, storm drains, etc.).